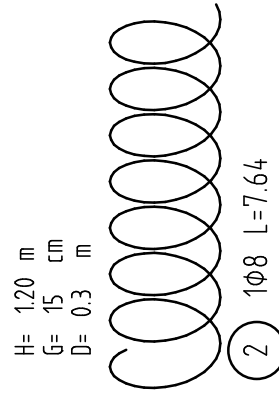
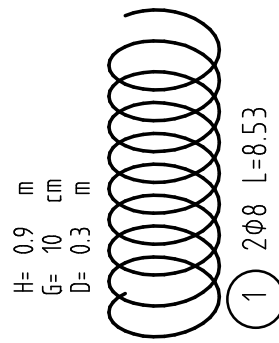
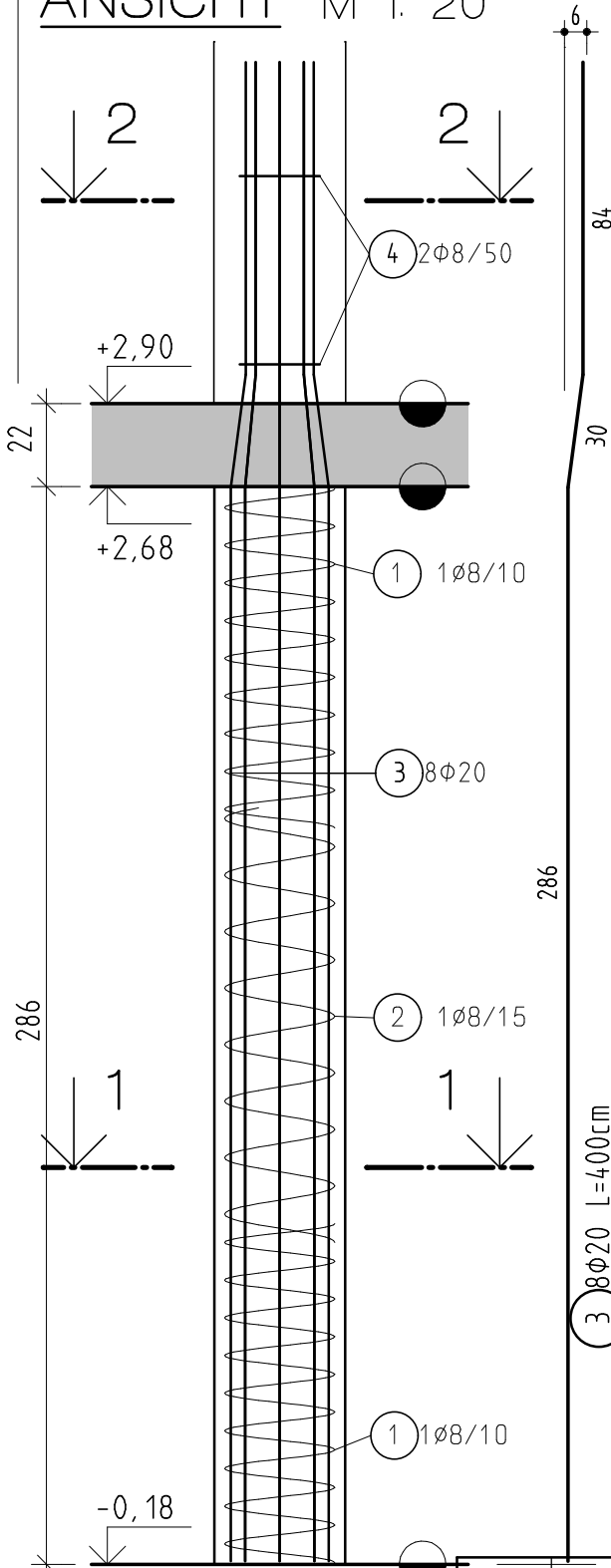
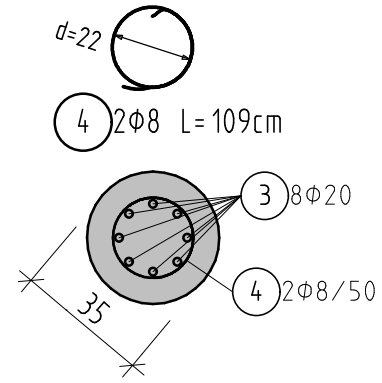


ANSICHT M 1: 20



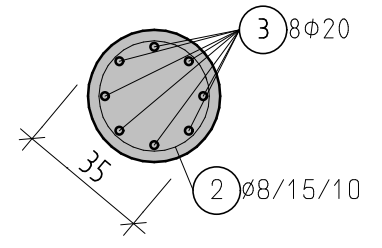
SCHNITT 2-2

M 1: 20



SCHNITT 1-1

M 1: 20



SÄULE 7

BAUSTOFFE:

BETON: C30/37 GK 22

STAHL: BST 550

Betondeckung: 2,5cm

Stabstahlliste BST 550

Pos.	Stck	φ	Einzel Laenge [m]	Gesamt Laenge [m]	Nennmasse [kg/m]	Masse je Pos [kg]
1	2	8	8.53	17.06	0.395	6.74
2	1	8	7.64	7.64	0.395	3.02
3	8	20	4.00	32.00	2.470	79.04
4	2	8	1.09	2.18	0.395	0.86
Gesamtmasse (Summe) [kg]						89.66